

# **Which floor should the photovoltaic panels be placed on**





## Overview

---

What is the optimal tilt angle of photovoltaic solar panels?

The optimal tilt angle of photovoltaic solar panels is that the surface of the solar panel faces the Sun perpendicularly. However, the angle of incidence of solar radiation varies during the day and during different times of the year.

What angle should solar panels be installed on a flat roof?

The best angle for a solar panel system in the UK is between 20° and 50°. At this kind of angle, your solar panels will be exposed to more sunlight, which will lead to more energy production and larger savings. If you want to install solar panels on a flat roof, you can still achieve the optimal angle by propping them onto a mounting system.

What is the best angle for a solar panel system?

What's on this page?

The best angle for a solar panel system in the UK is between 20° and 50°. At this kind of angle, your solar panels will be exposed to more sunlight, which will lead to more energy production and larger savings.

What angle should solar panels be installed in London?

For instance, the latitude of London is 51.5 degrees, but the optimum angle for solar panels in this city is 36 degrees. However, in the case of most rooftop solar panel installations, the angle of the solar panels is determined by the angle of the roof - there isn't much you can do to change it.

What is the best angle for solar panels in 2024?

Benefit from the BEST Solar Deals in 2024 and SAVE hundreds per year on your bills! The best angle for solar panels in the UK is between 30° and 40°. To ensure that your solar panels can produce energy optimally, they should be installed on a south-facing part of your roof.



Where should solar panels be installed?

To maximise the output of solar panels, you will want to have them installed on a south-facing section of your roof. South-facing solar panels in the UK receive the most sunlight exposure, as the sun is in the sky the most in this direction.



## Which floor should the photovoltaic panels be placed on

---

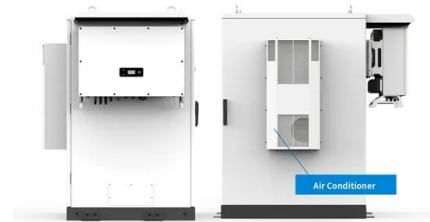


### Which Direction Should Solar Panels Face in Ireland

When having solar panels installed on your property, you must first decide which direction they should be facing in order to best take advantage of the sun.. In Ireland, south facing solar panels will provide the most ...

### The best angle and direction for solar panels [UK, 2024]

Solar panels should ideally face south in the UK, though arrays that face east or west can also be extremely productive. North-facing solar panels aren't usually worth installing. On the other hand, panels that point towards the ...



### Solar Panel Stands (Making + Fixing)

The design helps easily adjust the position of a solar panel while it is being used to collect energy. The wheels enable easy movement so that you can use this stand anywhere ...

### Ground-mounted solar panels: what you need to ...

The average home requires about 19 solar ground-mounted panels. Here are the back-of-the-envelope calculations used to reach this figure: Let's assume the use of 400-watt panels and a location that gets 4 peak sun hours per



day. Each ...



### The World's First Walkable Renewable-Energy Generating Photovoltaic Floor

The landscaped pedestrian sidewalk boasts a solar-powered trellis and 27 slip-resistant semi-transparent walkable panels with photovoltaic technology that converts sunlight ...

### Structures for photovoltaic solar panels

Solar panel frames are systems specifically designed to hold photovoltaic modules in place and provide the optimal tilt to capture the maximum amount of solar energy. ...



### A Guide to Solar Panels for Flats

According to the solar panel installer, SolShare is the world's only technology that can connect multiple flats to a single rooftop PV array and share it fairly between residents. It ...

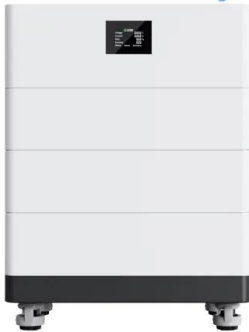


### What's the Best Angle for Solar Panels? , EnergySage

Flat roofs are good for solar because you can always tilt your panels toward the south. A common practice is to mount them at a 15-degree angle--enough of a tilt to keep off the debris and get the panels into the sweet ...



### High Voltage Solar Battery



### Where To Put Solar Panels and Is Your House Suitable?

In Ireland, you've probably seen a house or two that run on PV solar panels. That's because the roof is the best place to install your solar panels. The electricity generation ...

### How do I place solar panels correctly? : r/playrust

The panel should then face the direction directly between them, so South in this case. Like 2 but the "exact direction" wanders over time and the panels need to be adjusted accordingly. ...



### Best Angle & Direction for Solar Panels UK: November ...

The best angle for solar panels in the UK is between 30° and 40°. To ensure that your solar panels can produce energy optimally, they should be installed on a south-facing part of your roof. Solar panel angle and ...



### [Solar Panel Angle By Postcode UK](#)

The best all-year-round angle for PV (photovoltaic) solar panels in the UK is 35-40 degrees. The best angle for each region within the UK will vary slightly within this. For seasonal changes, the best angle for ...

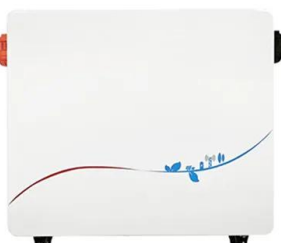


### **Solar panel inclination angle, location and orientation**

Ideally your panels should be pointing directly at the sun in the middle of the day during the summer. A good rule of thumb for maximum annual energy output is to tilt your panels at an angle equal to your latitude. For ...

### **A Full Guide to Solar Panel Placement and Installation**

First, let's talk about where solar panels should be placed. Ideally, they should be installed in a location that gets direct sunlight for most of the day. This means that south-facing roofs are often the best option. The ...



### **Best direction for solar panels: How to position your ...**

To find out, we used the MCS PV Output Calculator, which lets MCS-certified solar panel installers calculate the best direction and angle for panels anywhere in the UK. It reveals how much more, and less, energy a ...



### Solar Panel Angle: how to calculate solar panel tilt ...

Discover how to calculate the optimum solar panel angle for your solar system according to your location and the season. Two calculation methods explained. I placed a steel tek 1 1/4" 90 swivel socket about 12" from top ...



### Ground-mounted solar panels: If you have the space, go for it

4 ???· Based on thousands of quotes from the EnergySage Marketplace, the average home ground-mounted solar panel system costs about \$60,200 before incentives. But because most ...

### The complete guide to ground-mounted solar panels

Unlike typical solar panel systems, ground-mounted panels are fixed into the floor, instead of on the roof. Although they're commonly used for solar farms, they can also be ...



### [Ground-Mounted Solar Panels , Expert Guide](#)

A ground-based solar panel system also typically needs more wiring because it's farther from the home's electrical system. And the cables usually need to run along ...



### What Solar Panel Orientation is best in the UK?

If even one panel is shaded it will reduce the output of all your panels unless you invest in micro-inverters or other optimizing devices. Solar Panel Orientation and Elevation: So we've ...



### What is the Gap Between Two Solar Panels?

The minimum distance between rows of PV panels when placed on the ground in an open space or on a flat roof is important to avoid the shading effect over the panels. It ...

### Keeping Solar Batteries Outside (The Dos and Don'ts)

Solar batteries, also known as solar energy storage systems or solar battery storage, are devices that store excess electricity generated by solar panels (photovoltaic or PV panels). They work in conjunction with a solar PV system ...



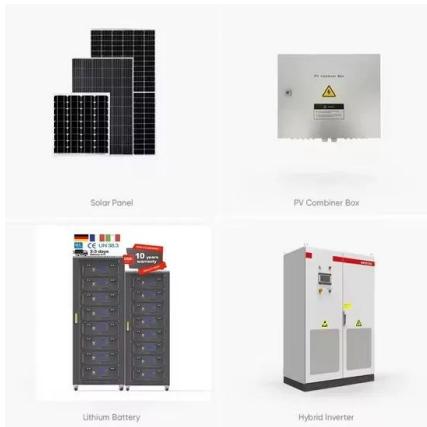
### The Complete Guide to Solar Thermal Panels for Water ...

There are several benefits of installing solar thermal panels in your home or business for solar water heating. Renewable energy - Solar thermal panels utilise clean and renewable solar energy, reducing reliance on non ...



## Ground Mounted Solar Panels: November 2024 Guide

Ground mounted solar panels are 20%-25% more efficient than rooftop solar panels, as they can be positioned in the ideal direction and angle to maximise energy ...



### How are solar panels installed? , 11 steps explained

Solar panel installation: at a glance. ? The first step of a solar panel installation is a survey of your property. ? Scaffolding will usually go up four or five days beforehand. ? Most solar panel installations take between ...

## Photovoltaic pavement and solar road: A review and perspectives

As a type of inexhaustible and infinite energy source [19], solar energy plays a vital role in the energy system around the world. At the same time, since most roadways are ...



### How are solar panels installed? , 11 steps explained

Here's how a solar panel installation works from start to finish, and what you should do before and after the installation. boards on the floor, and a large enough hatch. If ...





### Solar Panels for Apartments in the UK: November 2024 Guide

Solar panel installation can be expensive. To give you an idea, a standard 250W solar panel in 2022 costs £400-£500; however, it is not enough to power an entire ...



### What is the best direction for solar panels to face?

South-facing solar panels will perform the best for a vast majority of homeowners. If you do not have a south-facing roof - don't worry! Your solar panels will still be able to produce energy, ...

### What Solar Panel Orientation is best in the UK?

Your solar panel orientation is very important when it comes to maximising the amount of electricity that your solar panels will produce. As we're in the northern hemisphere the best solar panel orientation is obviously south, but:



### The Complete Guide to Ground-Mounted Solar Panels

I. Introduction . Welcome to our guide on ground-mounted solar panels! Nowadays, everyone's talking about solar energy, and it's easy to see why 's a clean, green ...



### [The Best Angle for Solar Panel Installation](#)

As a rule of thumb, the optimal solar panel angle is the latitude of where your home is located. For example, Miami, Florida is at 25.7617° N so solar panels on homes there should be installed at around a 25° angle. In ...



## Contact Us

---

For catalog requests, pricing, or partnerships, please visit:  
<https://www.vdbconstruction.co.za>