

Why should photovoltaic panels be placed due south





Overview

Should solar panels face south?

By positioning your solar panels to face south, you are optimizing their exposure to sunlight throughout the day. This orientation allows the panels to capture the maximum amount of solar radiation, converting it into usable electricity. As a result, you can expect increased energy efficiency and a higher overall output from your solar system.

Are south-facing solar panels right for You?

One of the key advantages of south-facing solar panels is their ability to consistently produce energy. Since the sun predominantly moves across the southern part of the sky in the Northern Hemisphere, aligning your panels in this direction ensures they receive ample sunlight throughout the day.

Which direction should solar panels face in the UK?

In the UK, solar panels should ideally face south in order to capture the most daylight throughout the day. It's best to avoid installing solar panels that face north, since there's never much daylight from that direction in the northern hemisphere. Panels can still perform well facing east or west.

What is solar panel direction?

'Solar panel direction' refers to the orientation of solar panels specifically the cardinal direction at which they are positioned to face the sun. In the Northern Hemisphere, the optimal direction is typically true south allowing panels to capture the maximum amount of sunlight throughout the day. What Is The Best Angle For Solar Panels?

.

What happens if you turn solar panels away from true South?

Turning solar panels away from true south will generally result in output losses



of less than 30%, but in some extreme cases losses of close to 60% may be seen. The precise drop in energy production is determined by three factors:
Distance from south: The number of degrees the panels are turned away from true south.

Which direction should solar panels be placed?

In the northern hemisphere, the general rule for solar panel placement is, solar panels should face true south (and in the southern, true north). Usually this is the best direction because solar panels will receive direct light throughout the day. However there is a difference between magnetic south and true south that must be considered.



Why should photovoltaic panels be placed due south



Best Angle And Orientation For Solar Panels - Forbes ...

The proper solar panel orientation for homes located north of the equator is facing true south. For homes located south of the equator, it will be the opposite--facing true north.

Best Angle for Solar Panels: It's Not Your Latitude

1. Our Solar Panel Tilt Angle Calculator. Because the research paper's formulas offer a slight improvement over latitude, a friend and I decided to code a free solar panel angle ...



North vs South Facing Solar Panels: Which is best?

If you live in the UK and want to install solar panels on your roof, ground or shed, the best direction for them to face is south. This is because south-facing solar panels get the most sunlight throughout the day in the ...

What is the best direction for solar panels to face?

Where peak electricity rates are twice as much (2x) as off-peak rates, the ideal solar panel orientation is very close to the south. If peak rates are extremely high - 3x your off-peak rates, or more - then solar panels should face



southwest.

GRADE A BATTERY

LiFePO4 battery will not burn when overcharged, over discharged, overcurrent or short circuited and can withstand high temperatures without decomposition.



Solar Panels Face South: Optimal Sun Exposure Explained

The Solarclue Blog is created to update the customers with a clear picture of the latest solar news and products, general informations, projects and offerings from ...



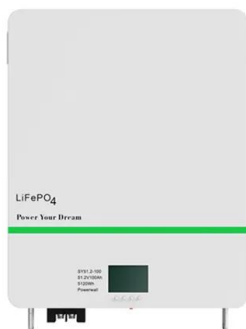
Why should solar panels face south - Solar Green ...

South-facing panels, in the Northern Hemisphere, align perfectly with the sun's path, ensuring that panels receive sunlight as directly as possible, especially during peak sunlight hours. This direct exposure is key to ...



Why More Solar Panels Should Be Facing West, Not South

Some homeowners have their panels face south because that is the direction of the roof. While some solar panel owners are paid time-of-use rates and are compensated by ...





Do Solar Panels Have to Face South to be Worth it in the UK?

Do you have to have a South facing roof to have solar panels? In the UK, South facing panels will generate more than other orientations. Solar panels perform at their best when the sun is ...

TAX FREE

ENERGY STORAGE SYSTEM

Product Model
HJ-ESS-215A(100KW/215KWh)
HJ-ESS-115A(50KW 115KWh)

Dimensions
1600*1280*2200mm
1600*1200*2000mm

Rated Battery Capacity
215KWH/115KWH

Battery Cooling Method
Air Cooled/Liquid Cooled

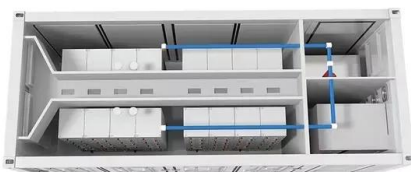



What Direction and Angle Should Solar Panels Face in India?

Orientation: A south-facing roof is generally considered ideal for maximizing solar energy production. East and west-facing roofs can also be suitable but may have slightly ...

Sun Direction Maps: Your Guide to Optimal Solar Panel ...

Sun Direction Maps: Essential tools that show the Sun's path across the sky, helping optimize solar panel placement for maximum efficiency. Reading the Map: Key ...



Solar Orientation For Solar Arrays and Panels

Orientation is typically expressed as the angle a solar device faces off of due south. For example, a PV array sitting on a house facing due south (corrected for magnetic declination) would have an azimuth of 180°.



What Direction Should My Solar Panels Face?

How large should your system be, how much is it going to cost, what company you should buy your panels from, and importantly, can your roof support a solar panel system ...



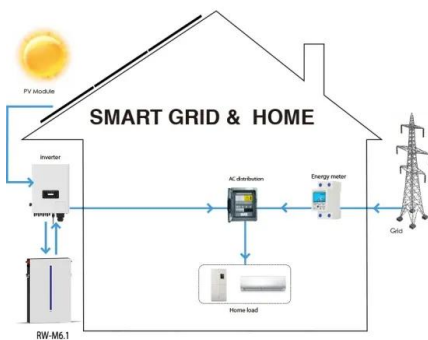
The best angle and direction for solar panels [UK, 2024]

The impact of direction on solar panel output. Your solar panel system's direction is one of the biggest factors in determining its output. This chart below uses an ...



The best angle and direction for solar panels [UK, 2024]

Solar panels should ideally face south in the UK, though arrays that face east or west can also be extremely productive. North-facing solar panels aren't usually worth installing. On the other hand, panels that point towards the ...



What is the Best Direction for Solar Panels to Face

East or west-facing panels can also work well but may produce 15-20% less energy than south-facing panels. 3. Do solar panels need to be south-facing? Solar panels ...



Best Angle & Orientation For Solar Panels

The best angle to install solar panels is 30°. The direction they should face if possible, is due south. If you're able to install solar panels with a tilt angle of 30° and facing due south, you'll ...

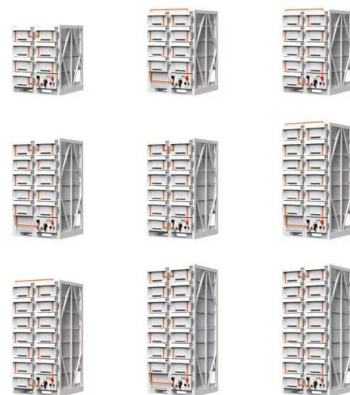


Solar panel orientation: how to define it correctly

Solar panel inclination. The optimal inclination of a photovoltaic panel is influenced by the geographical location's latitude where the panels are to be mounted. As a ...

Solar Panel Angle: how to calculate solar panel tilt ...

Solar panel angle. Calculating the Optimal solar panel Angle. As a rule of thumb, solar panels should be more vertical during winter to gain most of the low winter sun, and more tilted during summer to maximize the output. ...



Solar Panel Orientation and Positioning of Solar Panel

Azimuth - This is the compass angle of the sun as it moves through the sky from East to West over the course of the day. Generally, azimuth is calculated as an angle from true south. At solar noon which is defined as an azimuth angle of ...



Why we should invest in solar panels in South Africa

A 'revolution' in home solar uptake. Driven by blackouts and soaring energy bills, home solar systems have boomed in South Africa in 2022. In the first five months of the year alone, South ...



Solar panel orientation

In the northern hemisphere, the general rule for solar panel placement is, solar panels should face true south (and in the southern, true north). Usually this is the best direction because solar panels will receive direct light throughout the day.

Maximising Solar Energy Generation: Why Solar Panels ...

According to the Energy Saving Trust, solar panels facing south in the UK can generate up to 40% more electricity than panels facing east or west. A study conducted by the Centre for Alternative Technology confirms ...



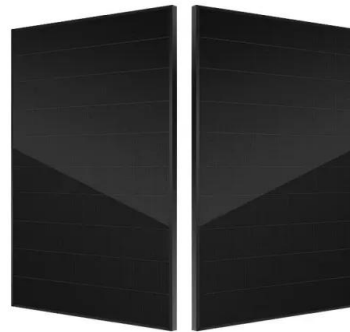
What is the Best Angle for Solar Panels? Maximizing ...

Why Does Solar Panel Angle Matter. For year-round energy production, solar panels should generally be oriented toward the equator - due south in the northern hemisphere and due north in the southern hemisphere. ...



Solar Panel Spacing Gaps (Why They Are Important)

Solar panel frames are constantly contracting and expanding, so the panels could possibly touch each other and cause damage if they are too close together. This is one ...



A guide for where to place your solar panels , Geo Green Power

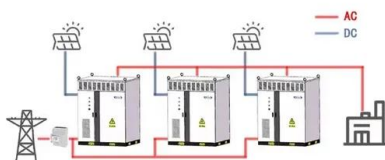
The angle of your solar panels is certainly important, but the most critical factor in terms of maximising energy production from your solar PV system is the direction the panels ...

Which Direction Should Your Solar Panels Face?

If you are installing a ground-mounted system, you are typically able to place the panels facing any direction you like, so you can just choose south (or north in the southern hemisphere). ...



WORKING PRINCIPLE



Solar panels: East-facing or west-facing roof?

Whether the inverter will be able to handle the additional panels will depend on its features - many inverters in that size range have dual-input Maximum Power Point Tracking ...



Unveiling the Mysteries of Solar Panel Direction: Why Do Solar Panels ...

Sun's Path in the Northern Hemisphere. The sun's path is a fascinating phenomenon that greatly influences the direction for solar panels. The tilt of the Earth's axis is ...

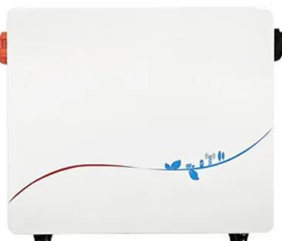


Best Angle & Direction For Solar Panels in the UK , Glow Green

In the Northern Hemisphere, solar panels should ideally face true south to capture the maximum amount of sunlight throughout the day. This southern orientation allows ...

Why should solar panels face south - Solar Green ...

This aspect of solar installation involves understanding restrictions on system size, where you can place your panels, and how they should look to comply with local standards. To ensure a hassle-free ...



What's the Best Angle for Solar Panels? , EnergySage

Flat roofs are good for solar because you can always tilt your panels toward the south. A common practice is to mount them at a 15-degree angle--enough of a tilt to keep off the debris and get the panels into the sweet ...



What is the Gap Between Two Solar Panels?

The minimum distance between rows of PV panels when placed on the ground in an open space or on a flat roof is important to avoid the shading effect over the panels. It ...



Solar panel orientation: How using East-West structures improves ...

A general rule for optimal annual energy production is to set the solar panel tilt angle equal to the geographical latitude. For example, if the location of the solar array is at 50o ...

Contact Us

For catalog requests, pricing, or partnerships, please visit:
<https://www.vdbconstruction.co.za>