

Wind energy storage flywheels





Overview

Flywheels store kinetic energy in a rotating mass, with the amount of stored energy (capacity) being dependent on the rotor inertia as determined by the mass and form, and rotatio.

11.2.1. Theory of energy storage using flywheelsThe kinetic energy stored in a rotating mass, where J .

11.3.1. Key featuresThe key features of flywheels are their ability to operate continuously at high power, and to withstand continuous cycling, typically for up to.

11.4.1. Commercial productsFlywheel systems using steel or composite rotors have been successfully developed and are being produced by several manufacturers. T.

11.5.1. IntroductionThe key advantages of flywheels are the ability to cycle continuously at high power, with a relatively low capacity and storage times in the orde.

There are many sources of information provided by manufacturers and research institutions. The short lists in Tables 11.3 and 11.4 should assist further reading and investigation.

In the 1950s, flywheel-powered buses, known as , were used in () and () and there is ongoing research to make flywheel systems that are smaller, lighter, cheaper and have a greater capacity. It is hoped that flywheel systems can replace conventional chemical batteries for mobile applications, such as for electric vehicles. Proposed flywhe.



Wind energy storage flywheels



Flywheel energy storage

Overview Applications Main components Physical characteristics Comparison to electric batteries See also Further reading External links

In the 1950s, flywheel-powered buses, known as gyrobuses, were used in Yverdon (Switzerland) and Ghent (Belgium) and there is ongoing research to make flywheel systems that are smaller, lighter, cheaper and have a greater capacity. It is hoped that flywheel systems can replace conventional chemical batteries for mobile applications, such as for electric vehicles. Proposed flywhe...

A coordinated control strategy for integrated wind power-flywheel

In this paper, a wind farm model with wind turbine, flywheel and battery energy storage system is established. Aiming at addressing the high frequency fluctuation caused by wind power fluctuation, a control strategy of hybrid energy system coordinate in primary frequency regulation is proposed.



[What is Flywheel Energy Storage?](#)

Beacon Power started testing their Smart Energy 25 (Gen 4) flywheel energy storage device at a wind farm in Tehachapi, California, in 2010. The system was built for the California Energy Commission as part of a wind power/flywheel demonstration project.

Flywheel energy storage technologies for



wind energy systems

This chapter provides an overview of flywheel storage technology. The rotor design and construction, the power interface using flywheels, and the features and key advantages are discussed. The status of flywheel technology is described, including a description of commercial products, specifications, and capital and running costs.



A review of flywheel energy storage systems: state of the art and

Electrical energy is generated by rotating the flywheel around its own shaft, to which the motor-generator is connected. The design arrangements of such systems depend mainly on the shape and type



Smoothing of wind power using flywheel energy storage system

Smoothing of wind power using flywheel energy storage system ISSN 1752-1416 Received on 5th February 2016 Revised 29th July 2016 Accepted on 8th September 2016 E-First on 14th December 2016 doi: 10.1049/iet-rpg.2016.0076 Nair S111 1




Product Model
HJ-ESS-215A(100KW/215KWh)
HJ-ESS-115A(50KW 115KWh)

Dimensions
1600*1280*2200mm
1600*1200*2000mm

Rated Battery Capacity
215KWH/115KWH

Battery Cooling Method
Air Cooled/Liquid Cooled



Design of a flywheel energy storage system for wind ...

Flywheel energy storage system (FESS) will be needed at different locations in the wind farm, which can suppress the wind power fluctuation and add value to wind energy. A FESS that can store up to 3.6 kWh ...



Energy storage systems for services provision in offshore wind farms

Flywheel energy storage (FES) is an electromechanical technology that stores energy as kinetic energy. To charge the flywheel, the electrical machine is operated as a motor, accelerating the flywheel to very high speeds, while discharging involves operation as a generator, causing the flywheel to decelerate.

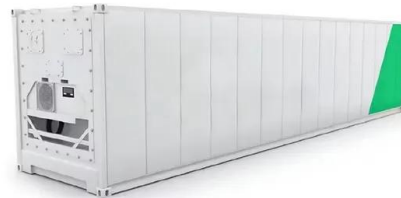


Flywheel Energy Storage Systems and Their Applications: A Review

The flywheel energy storage system (FESS) offers a fast dynamic response, high power and energy densities, high efficiency, good reliability, long lifetime and low maintenance requirements, and is

A Review of Flywheel Energy Storage System ...

One such technology is flywheel energy storage systems (FESSs). Compared with other energy storage systems, FESSs offer numerous advantages, including a long lifespan, exceptional efficiency, high power ...



What is Flywheel Energy Storage - How Does it Work?

Flywheel energy storage is a promising technology for replacing conventional lead acid batteries as energy storage systems. Most modern high-speed flywheel energy storage systems (FESS) consist of a huge rotating cylinder supported on a stator (the stationary part of a rotary system) by magnetically levitated bearings.



Optimisation of a wind power site through utilisation of flywheel

Due to their resilience to high cycle rates, flywheels are ideally suited to act as an energy store in this scenario. This paper utilises real world data to simulate a wind farm operating in tandem with a Flywheel Energy Storage System (FESS) and assesses the

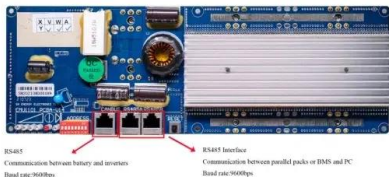


Flywheel Energy Storage

Flywheel energy storage stores kinetic energy by spinning a rotor at high speeds, offering rapid energy release, enhancing grid stability, supporting renewables, and reducing energy costs. What is Flywheel Energy Storage? Flywheel energy storage is a form of mechanical energy storage that works by spinning a rotor (flywheel) at very high speeds.

Flywheel energy storage systems: A critical review on ...

In fact, there are different FES systems currently working: for example, in the LA underground Wayside Energy Storage System (WESS), there are 4 flywheel units with an energy storage capacity of 8



A review of flywheel energy storage systems: state of the art and

Robust energy management of a hybrid wind and flywheel energy storage system considering flywheel power losses minimization and grid-code constraints



Flywheel Energy Storage , Energy Engineering and Advisory

The flywheel energy storage system is useful in converting mechanical energy to electric energy and back again with the help of fast-spinning flywheels. This system is composed of four key parts : a solid cylinder, bearings, a motor/generator and a vacuum sealed casing.



A review of mechanical energy storage systems combined with wind ...

Mechanical energy storage systems (MESSs) are highly attractive because they offer several advantages compared to other ESSs and especially in terms of environmental impact, cost and sustainability. There are three main types of MESSs, as shown in Fig. 1; flywheel energy storage system (FESS) [18], pumped hydro energy storage (PHES) [19] and ...



Operation of a Wind Turbine-Flywheel Energy Storage System ...

2.3. Algorithm of a Flywheel Energy Storage Cooperation with a Wind Turbine (Farm)
According to the established assumptions, a wind turbine with the nominal power P_{WTN} and specific power curve $P = f(v, w)$ working with flywheel energy storage form a



(PDF) A review of flywheel energy storage systems

flywheel/kinetic energy storage system (FESS) is gaining steam recently. There is wind power fluctuations and augment wind power penetration. Similarly, due to the high power density and





Flywheel energy storage systems: A critical review on

During sunny or windy seasons, storing energy helps in compensating the oscillations in power that occurs because of wind and solar sources. 27, 28, 83 Flywheels can be used along with batteries to enhance the output power of a ...



Flywheel storage power system

A flywheel-storage power system uses a flywheel for energy storage, (see Flywheel energy storage) and can be a comparatively small storage facility with a peak power of up to 20 MW. It typically is used to stabilize to some degree power grids, to help them stay on the grid frequency, and to serve as a short-term compensation storage.



Intelligent control of flywheel energy storage system associated ...

Intelligent control of flywheel energy storage system associated with the wind generator for uninterrupted power supply December 2020 International Journal of Power Electronics and Drive Systems



Dynamics of a Flywheel Energy Storage System Supporting a Wind ...

Integration of an induction machine based flywheel energy storage system with a wind energy conversion system is implemented in this paper. The nonlinear and linearized models of the flywheel are studied, compared and a reduced order model of the same simulated to analyze the influence of the flywheel inertia and control in system response during a wind ...





Smoothing of wind power using flywheel energy storage system

Flywheel systems are quick acting energy storage that enable smoothing of a wind turbine output to ensure a controllable power dispatch. The effectiveness of a flywheel ...

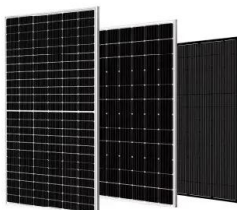


A review of flywheel energy storage systems: state of the art and

Fig.1 has been produced to illustrate the flywheel energy storage system, including its sub-components and the related technologies. A FESS consists of several key ...

TU Dresden builds huge flywheel storage system for wind

Smoothing wind energy feed-ins But Breitenbach's team has a different focus. The FESS of TU Dresden is to be used in tandem with wind turbines. The flywheels accelerate as soon as the connected turbine generates electricity. "The storage is full once rotation



Flywheel Energy Storage Basics - The Energy Grid

As the vehicle was braking, the breaking energy would be used to wind the flywheel, which could then be used to accelerate. Flywheel energy storage (FES) is a technology that stores kinetic energy through rotational motion. The stored energy can be used



Active power control of a flywheel energy storage system for wind

Bleijs J.A.M., Hardan F., and Ruddell A.J. Flywheel energy storage system for wind power smoothing in weak and autonomous networks Proc Wind Power for the 21st Century Conf. 25-27 September 2000 Kassel, Germany 270-273



FLEXIBLE SETTING OF MULTIPLE WORKING MODES

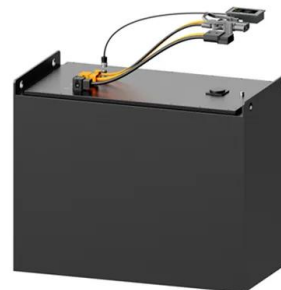


A review of flywheel energy storage systems: state of the art and

An overview of system components for a flywheel energy storage system. Fig. 2. A typical flywheel energy storage system [11], which includes a flywheel/rotor, an electric machine, bearings, and power electronics. Fig. 3. The Beacon Power Flywheel [12], which

Research on Electromagnetic System of Large Capacity Energy Storage

A large capacity and high-power flywheel energy storage system (FESS) is developed and applied to wind farms, focusing on the high efficiency design of the important electromagnetic components of the FESS, such as motor/generator, radial magnetic bearing (RMB), and axial magnetic bearing (AMB). First, a axial flux permanent magnet synchronous machine ...



China Connects World's Largest Flywheel Energy Storage ...

China has connected its first large-scale, grid-connected flywheel energy storage system to the power grid in Changzhi, Shanxi Province. The Dinglun Flywheel Energy Storage Power Station, with a capacity of 30 MW, is now the world's largest flywheel energy storage project which is operational, surpassing previous records set by similar projects in the ...



Applications of flywheel energy storage system on load

Numerous comprehensive literature have been conducted in the field of flywheel exploring their characteristics and applications on power system. Some researchers have concentrated on the structural aspects and their applications on different fields [24] [23], [25], researchers have provided overviews of FESS across diverse domains, including frequency ...



[How do flywheels store energy?](#)

Flywheel energy and power storage systems by Björn Bolund, Hans Bernhoff, and Mats Leijon. Renewable and Sustainable Energy Reviews, 11 (2007), 235-258. Considers how flywheels can be used for electricity storage. Historical interest

Research on frequency modulation application of flywheel energy storage

Energy storage flywheel; Wind power generation; FM. Application; research. 1. Introduction With the rapid development of renewable energy in China, the phenomenon of abandoning wind, light and water is getting worse. According to the survey, the amount of



Contact Us

For catalog requests, pricing, or partnerships, please visit:
<https://www.vdbconstruction.co.za>