

# Wind power generation wind farm map





## Overview

---

What is the Global Wind Atlas?

The Global Wind Atlas is a free, web-based application developed to help policymakers, planners, and investors identify high-wind areas for wind power generation virtually anywhere in the world, and then perform preliminary calculations.

How much energy does a wind farm use?

The number of operational wind turbines. The total installed capacity of all offshore wind farms. Calculated using the most recent statistics from DESNZ showing that annual GB average domestic household consumption is 3,239kWh (as of January 2024, updated annually).

What is a wind project phase?

It includes wind farm phases with capacities of 10 megawatts (MW) or more. A wind project phase is generally defined as a group of one or more wind turbines that are installed under one permit, one power purchase agreement, and typically come online at the same time.

How many wind turbines are there in the world?

With a total of 350,000+ wind turbines globally. How much electricity is generated from wind power each year?

According to the latest data from the International Energy Agency (IEA), the global electricity generation from wind power was approximately 1,335 terawatt-hours (TWh) in 2020.

How many turbines are on a map?

0 turbines on map. The turbine positions and the descriptions are loaded from openstreetmap (OSM) through the public overpass-api.de. Sometimes the API is slow, so you have to be patient if turbines do not show up immediately.



Brighter turbines do not contain meta-data. Wind turbine map, always up-to-date with more than 300k turbines worldwide.

How much power does a wind turbine generate?

The mean capacity of wind turbines in commercial operation in 2020 was 2.75 megawatts (MW), operating at 42% capacity factor and generating on average 843,000 kWh per month, enough to power 940 average homes in the United States with electricity. Can wind turbines harm wildlife?



## Wind power generation wind farm map

---

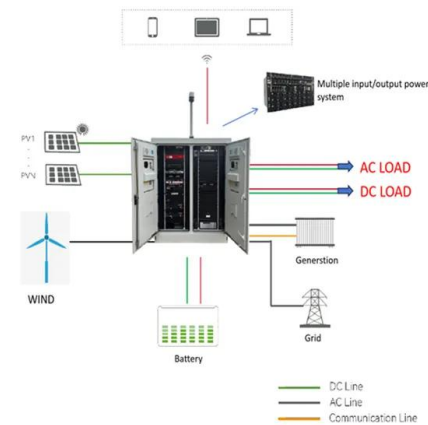
### [Wind Power Plants in France \(Map\)](#)



According to the latest data from the International Energy Agency (IEA), the global electricity generation from wind power was approximately 1,335 terawatt-hours (TWh) in 2020. This ...

### [Canadian Wind Turbine Database](#)

The Canadian Wind Turbine Database contains the geographic location and key technology details for wind turbines installed in Canada. This dataset was jointly compiled by researchers ...



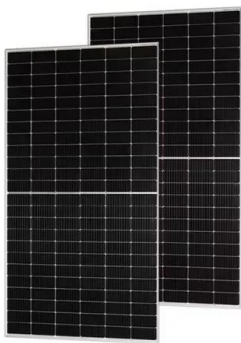
### [Wind Power Plants in India \(Map\)](#)

Data and information about Wind power plants and their location plotted on an interactive map of India. Wind: Tata Power: Tata Wind Farm: 50.4 MW: Wind: Theni Wind Farm: 24.0 MW: ...



### Wind Power , Sri Lanka Sustainable Energy Authority

Wind Power. Wind Power is one of the fastest-growing renewable energy technologies. Usage is on the rise worldwide, in part because costs are falling. Wind power generation took place in the United Kingdom and the United ...



### [New Zealand Wind Energy Association \(NZWEA\)](#)

The New Zealand Wind Energy Association, (NZWEA), is a membership-based industry organisation supporting the power of wind as a reliable, sustainable, clean & commercially ...

### **Global Wind Atlas**

The Global Wind Atlas helps policymakers, planners, and investors identify high-wind areas for wind power generation virtually anywhere in the world. Global onshore coverage; Offshore coverage up to 200 km from the shoreline; Wind ...



### [Wind Farms in the UK: The Growth and Impact](#)

The UK's current installed wind generation capacity exceeds 28 GW, with more than 13 GW generated offshore. Wind power accounted for 29.4% of the UK's electricity ...





### [Map of wind farms in Spain](#)

Installed wind power & generation; Map of wind farms in Spain; Map of wind power industry in Spain; Regulation; Wind energy in the world; Wind energy and the price of light; Wind energy ...



### [WINDEXchange: Wind Energy in Colorado](#)

Net Generation from Wind. Updated Annually. Colorado 50-Meter Community-Scale Wind Resource Map; Colorado 30-Meter Residential-Scale Wind Resource Map; Rush Creek ...

### **New European Wind Atlas**

This interface provides access to a broad selection of wind atlas datasets from the New European Wind Atlas project. You can use this tool to: Visualise a selection of meso- and micro-scale ...



### [WINDEXchange: Wind Energy in Texas](#)

U.S. Wind Turbine Database. The United States Wind Turbine Database (USWTDB) provides the locations of land-based and offshore wind turbines in the United States, corresponding wind project information, and turbine technical ...



## Wind Turbine Energy , Renewable Energy Technologies

The development of both offshore and onshore wind through the use of wind turbines and wind farms, is central to SEAI's energy policy. It is the second greatest source of electricity ...



### [UK Wind Farms: What does the latest data say?](#)

The following map shows all 802 UK wind farms scattered across rural areas and shallow seas of the UK, taking advantage of the UK's significant wind resource. Only about 5% of all UK ...



## Wind power

This article deals only with wind power for electricity generation. Today, wind power is generated almost completely with wind turbines, generally grouped into wind farms and connected to the electrical grid. In 2022, wind supplied over ...

LPR Series 19  
Rack Mounted



## Renewable Energy Map

Hornsea Two is located 89km off the Yorkshire coast, adjacent to sister project Hornsea 1. The 1.3GW project comprises 165 wind turbines, which will help power over 1.4 million UK homes ...



### Wind power , Generating energy for the UK , EDF

UK Fuel Mix disclosure information published by Government Department DESNZ (PDF, 173 KB), recognises electricity from wind, solar and nuclear fuel produces zero carbon dioxide emissions at the point of generation.. The zero ...



### Wind Farms In Australia , State-By-State Guide

Source: Renewables Network Map. Wind Farms in Queensland. QLD's wind farm developments are still largely underway, with only five operational wind farms with a ...

### [WINDEXchange: Wind Energy in California](#)

California 50-Meter Community-Scale Wind Resource Map; California 30-Meter Residential-Scale Wind Resource Map; The Electricity Markets & Policy Group at Lawrence Berkeley National Laboratory focuses on renewable power ...



### Wind Power Plants Across the Globe (World Map) , database.earth

Global Wind Power Plants. Taralga Wind Farm: 107.0 MW: Wind: State Power Investment Corporation: Toora Wind Farm: 21.0 MW: Wind: RATCH-Australia: Walkaway Wind Farm:



## Contact Us

---

For catalog requests, pricing, or partnerships, please visit:  
<https://www.vdbconstruction.co.za>