

# **Xbox 360 power button solid red**





## Overview

---

**Solution:** Replace the AV cable with a new one or with an HDMI cable. If you notice that all four quadrants of the power button are illuminated red, this typically indicates an issue with your console's console's Test with a replacement AV cable: Inspect the cable; if it is damaged, consider replacing it with a new one. Why is my Xbox 360 power button flashing red?

If you're seeing lights flashing red on the power button of your Xbox 360 console, this page can help you identify the cause of that warning, based on the number of lights that are flashing. One flashing light: There may be an issue with the power supply, hard drive, memory units, or accessories, or your console may need service.

Why does my Xbox 360 have a red light?

My Xbox 360 has a solid red light and won't turn on. I've tried two different power cords. Is there anything I can do or is it just done?

That is typical of an internal hardware failure. You will have to get it repaired or replaced. Happy Gaming! Sorry to hear it. The red light is usually associated with a hardware issue.

How do I fix a red flashing light on my Xbox 360?

Locate the hard drive on the side of your console. Not all Xbox 360 consoles include a hard drive—if yours doesn't, move on to Step 3: Remove memory units below. Press the release button on the hard drive, and lift the hard drive away from the console. Turn your console back on. Check to see if you still have a red flashing light on your console.

Why is my Xbox 360 power brick red?

If it is red it is likely defective. If the power brick checks out okay, see if you can get a secondary error code out of the console. You should be able to do this by holding the controller sync button. - Xbox 360 S.



### How do I Fix my Xbox X power button not working?

Position the back of the hard drive against the back of the hard drive bay. Push the front end of the hard drive down until it clicks in place. Turn on your console. If this solution works, you won't see an error message and your Xbox's power button will return to having one or more steady green lights, and no flashing or red lights.

### Why is my Xbox 360 ringing red?

If the Xbox 360 displays three red rings, there may be an issue with the power supply. If the Xbox 360 displays four red rings, it's having trouble communicating with the television. While the Xbox 360 S and Xbox 360 E don't have the red rings of death, you might see the console's power button blinking red.



## Xbox 360 power button solid red

---

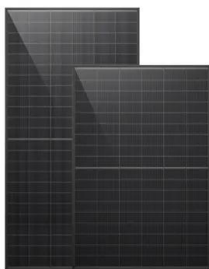


### Power Supply immediately goes red after attempting to power Xbox 360

I've tried two power supplies with the same result, when I press power on the 360 it goes from orange to red Press the power button - the xbox360 should make a beep sound (starting up), and the power brick light should change from orange to green briefly

### [The Xbox 360 console power button blinks red](#)

A blinking red light on the power button means that your console doesn't have enough ventilation. The red light will continue to blink until the console cools down. To fix this issue, let your console cool down by shutting it off if it hasn't already done so automatically.

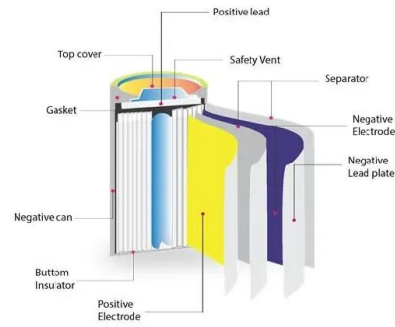


### How do I know if my Xbox 360 power supply is broken? - Gaming ...

In online slang, the red ring of death, also called RRoD, stands for the four LEDs surrounding the Xbox 360 power button. When the console is working, the upper-left quadrant of the ring is solid green.

### [SOLVED: My xbox is lit with a single red dot](#)

Within 10 seconds of turning on my Xbox 360 S, even after not playing it for days, the light goes from green to red dot. No screen image or error message. Here's what I've ...



### My Xbox 360 has a solid red light and won't turn on

The red light is usually associated with a hardware issue. You should check at <https://devicesupport.microsoft.com> to see if your console is eligible for a repair. However, you ...

### Solid red light on my xbox 360's power button. : r/xbox360

If you click both the controller sync button (on the console) and disc tray opening button, you can get a 4 digit code. If it's all lights, then it's a 0. If it's 3 lights, then it's a 3. If it's 2 lights, then it's a 2. If it's 1, then it's a 1. Send us the code here and I'll send a



### [Why is my Xbox 360 power brick orange?](#)

In online slang, the red ring of death, also called RRoD, stands for the four LEDs surrounding the Xbox 360 power button. When the console is working, the upper-left quadrant of the ring is solid green.



[XBox 360E Solid red light on power button](#)

Click here and we'll get you to the right game studio to help you. When you open the page, go to the "Help with games" section in order to find the right path to look for help.. Hello, As soon as i turn my xbox on, the power button turns from green to red. I have no



[XBox 360 S Red Solid Light on Power Button](#)

Hi. Our Xbox 360 S does not turn on. Instead of the green solid light after pushing the power button, the green light turns to a solid red light. As it does not turn on apparently, no notification can be found on the TV screen. I tried the hacks posted online, such as

**Troubleshoot your Xbox 360 power supply , Xbox Support**

If pressing the power button or eject button doesn't start your console, check the light on your power supply. The power supply light will either be green, red or flashing orange, orange (not flashing), or off (unlit). Go to the section below that matches the color you're



**What does a solid red light in the middle of the power button ...**

Based on forums and troubleshooting guides, the red dot is most often caused by overheating damaging internal components. But loose connections, faulty power supplies, ...





## Why does my Xbox 360 go from green light to solid red?

When I start Xbox 360 S, the light goes green for a few seconds and then goes to a red dot in the center. I replaced the power cord, still get the same result. I removed and ...



### SOLVED: Solid red light on console

If it is red it is likely defective. If the power brick checks out okay, see if you can get a secondary error code out of the console. You should be able to do this by holding the ...

### The Xbox 360 console power button blinks red

A blinking red light on the power button means that your console doesn't have enough ventilation. The red light will continue to blink until the console cools down. Let the console cool down. To ...



### **Xbox 360E Red Power Light, But Working : r/xbox360**

I just picked up an Xbox 360E and it powers up and works perfectly fine, but the power light is lit red, not flashing. I tried the sync and eject... We're a community all about Xbox Insiders- helping-Xbox Insiders with questions about pre-release software and gaming



### 5 Ways to Fix an Xbox 360 That Won't Turn On

While the Xbox 360 S and Xbox 360 E don't have the red rings of death, you might see the console's power button blinking red. In addition to the blinking light, you may see a message on your TV screen telling you the console is suffering from insufficient ventilation.



### 5 Ways to Fix an Xbox 360 That Won't Turn On

Two red LEDs mean the Xbox 360 is overheating. If the Xbox 360 displays three red rings, there may be an issue with the power supply. If the Xbox 360 displays four red rings, ...

#### **The logo on the power button goes green then solid red**

Hi i tried to power on my xbox 360 s because my xbox one x asked me to purchase a game on a xbox 360 my xbox worked fine last time i used it ans has been unplugged on a shelf ever since. Now when i plug it. The power brick turns from amber to green which is ok and stays green until i power off - Xbox 360 S



#### **Xbox 360:Error Codes**

No Power Board is unresponsive to power button  
Detailed Diagnostic/Repair Actions Red Ring of Death Ring of light quadrants flashing red/center light red. To diagnose, hold down the sync button and press eject 4 times Each time you press eject, a certain



### One red light flashes on an original Xbox 360 console

Learn what to do if one red light flashes on your Xbox 360 console. Turn off the console. Locate the hard drive on the top of the console (or on the left side, depending on how the console is oriented). Press the release button on the hard drive.



### How to Fix an Xbox 360 Not Turning on (with Pictures)

Check the lights on the front of the Xbox 360. The ring of lights around your Power button can indicate what kind of problem you are experiencing. This can help determine how to go about fixing it: Green lights - The system is operating normally. One red light - This

### Troubleshoot flashing red lights on your Xbox 360 console

If you're seeing lights flashing red on the power button of your Xbox 360 console, this page can help you identify the cause of that warning, based on the number of lights that are flashing. One flashing light: There may be an issue with the power supply, hard drive, memory units, or accessories, or your console may need service.



### [Xbox 360 E Troubleshooting](#)

If there is power coming through both the outlet and power cable but the Xbox will not turn on, the power button may be broken. The power button may feel loose or not "click" when you push the button. Go to our Xbox 360 E Button Board Replacement guide to fix this issue.



## Troubleshoot flashing red lights on your Xbox 360 console

If you're seeing lights flashing red on the power button of your Xbox 360 console, this page can help you identify the cause of that warning, based on the number of lights that are flashing.

...



### [Now what?! Solid red light on power button.](#)

For Xbox 360 on the Xbox 360, a GameFAQs message board topic titled "Now what?! Solid red light on power button.". I had a feeling it was. Even with the 320 HDD removed it did nothing. Only had 1 year and it was the Gears 3 one so I just missed that. Is it likely

## Xbox 360 Slim "System Error" and Power Button Red light Fix

Xbox 360 Slim "System Error" and Power Button Red light Fix Raiz Khan , Published: Jun 28, 2010 09:11 am Switch off your Xbox 360 Slim and remove your hard disk drive, then again switch



### [Check the Xbox 360 power supply](#)

Find out how to make sure all connections on your Xbox 360 power supply are firmly secured. If your power supply light is still flashing orange, solid red, or unlit, your power supply needs to be replaced. You can order a replacement Xbox 360 power supply from our Xbox Online Service Center. from our Xbox Online Service Center.





**Instant Red and flashing power button, loud fan : r/xbox360**

I've tried to plug my 360 Slim back in after a few years and the power button goes green, and immediately turns flashing red and the fan It has a problem with the resistors for the temp sensor. Flashing red is overheating. Solid red is hardware failure o



**XBOX 360 S**

The first time this happened, the screen went blank, Xbox shutdown and a solid red light appeared on the power button. Upon pressing the button again, the Xbox seemed to fire back up normally, until it came to loading the home screen. It died again. After this

[XBox 360 S Solid Red Light on power button](#)

If it's flashing red light, it's a sign that the console has overheated, if it's just solid red light, it's known as the "Red Dot of Death", which is the same as the older models of Xbox 360's "Red Ring of Death",



[Solid red light on power button](#)

I have a problem with a solid red power button on my Xbox 360 slim console and I already replaced my powersupply unit but still a red power button what can be the problem and what can I do, please help me This thread is locked. You can vote as helpful, but





### **power button went solid red on my xbox360 slim**

so while i was playing my xbox360 slim it turned off and the power button went solid red. i tried taking out the harddrive and everything like it showed on that other ...



## **Contact Us**

---

For catalog requests, pricing, or partnerships, please visit:  
<https://www.vdbconstruction.co.za>